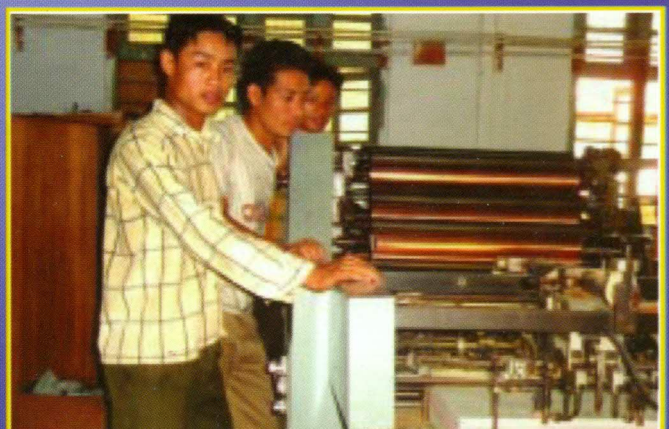


**FAsCE INDIA**  
Promoting Progress



# Consolidated Report 2007-10





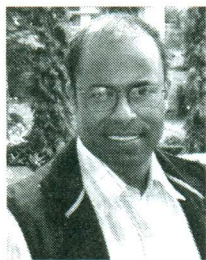




❖	Message from the President	2
❖	Executive Director's Message	3
❖	Genesis	4
❖	Report of the Financial Year 2009 – 10	5
❖	Report of the Financial Year 2008 – 09	11
❖	Report of the Financial Year 2007 – 08	18
❖	Financial Statements 2007-2010	25
❖	Case Study	35
❖	Governing Board of FAsCE India	35
❖	Staff of FAsCE India	36
❖	Partners in Development	36
❖	Organizational Structure	37
❖	Project Area Map	37



## Message from the President



Numerous are the organizations that work for the development of people in today's world. Each of them gives a focus, shares a passion, shows interest and dedicates the resources for definite developmental activities. No doubt, such activities help to shape and change the lives of people and communities. Moreover, they uphold the principles of common good, and work for the promotion of justice, human rights, and economic and social development. Church, in its two thousand years of history, has been a powerful ally in the progress and development of human society. With its strong grassroots, the Church undoubtedly remains the single largest organization in the world for social action, and perhaps, the greatest catalyst of change for the people of all cultures and traditions. Church's social involvement and teaching hinge on the person of Christ, and the values he came to proclaim for the humanity. Revealing God's love for humanity was the mission for which he dedicated his life on earth. Therefore, at all times, Church's social ministry aims at the integral development of human persons. The centrality of the human person as well as the dignity of every individual person is once again brought to the forefront in *Caritas Veritate* of Pope Benedict XVI: "I would like to remind everyone... engaged in boosting world's economic and social assets, that the primary capital to be safeguarded and valued is man, the human person in his or her integrity: "Man is the source, the focus and the aim of all economic and social life"(25). This primary vision has characterized the activities of the Church organizations throughout the world.

Fransalian Agency for social Care and Education in India (FAsCE India), as the social ministry organ of the Northeast India Province of the Missionaries of St. Francis De Sales (MSFS), is fully conscious of its role to uphold the human dignity of person. Ever since its inception in 2005, FAsCE India has, in very small and humble ways, spearheaded programs with a view to build up better human communities. Today, its commitment to the cause of development of people remains unchanged and it strives to improve its own capacity to serve the people in more organized ways. Over the years it has gained rich experience in net working with others and such experiences have given rise to greater confidence in launching out to new ventures in the field of human development. I take this opportunity to offer the sincerest appreciation to the executive director Fr. Jose Karipadam, msfs, and all his collaborators, who patiently carried out the ministry with love and devotion. I know that they had to endure many struggles and even work with several limitations. I acknowledge the generosity of all the agencies and partners who have supported our endeavors. I have my deepest appreciation for the persons and communities- the stakeholders of our programs and activities, whose lives FAsCE India has been blessed to touch and make some difference for the better.

The social ministry is very challenging. However, the passion, the zeal, the fire in the hearts of us can overcome the varied challenges that life offers. Our ministry must bring about qualitative and quantitative changes in the lives of people and communities. It is my hope and prayer that FAsCE India will be truly committed to its vision and mission; and creatively responds to the needs of people and achieves greater heights in the promotion of progress and human development.

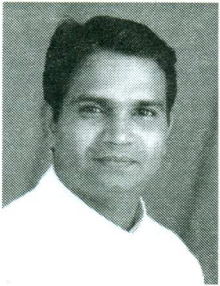
With the best of regards,  
Rev. Francis Thadathil, MSFS.

President  
Fasce India





## From the Director's Desk...



To All members, partners, and stakeholder friends,

It is a moment of great joy and satisfaction for me to present the first consolidated report of FAsCE India with a brief note of appreciation to all the stake holders for their continued and positive support for the growth and progress of the organization since its inception. This report covers the periods of 2007-08, 2008-09, and 2009-10 in three segments. FAsCE India, since its existence as a registered organization from 2005, has been coordinating and executing the various social and developmental activities of the North East India Province of the Missionaries

of St. Francis De Sales.

'Man is a social animal' and lives his life through 'a web of relationships'. Believing and acknowledging the fact, FAsCE India aims to streamline the various initiatives and commitments in the social field through its intervention in a variety of areas for the growth of humankind. FAsCE India achieves slow but steady positive results in its attempt for socio-economic and educational improvement. Many of the funded activities under social issues were also undertaken through its partner-implementer, the St. Francis De Sales Society, in the various parts of the Northeast.

Besides curriculum based education through established institutions, FAsCE India regularly conducts skill training, organizes seminars, promotes non-formal education and adult literacy programs and provides educational assistance. In the developmental field, FAsCE India concentrates on strengthening the weaker segments of the communities through the SHGs, improving their economic condition. The organization also focuses on women empowerment programs for effective participation in family as well as community development. The attached Reports will provide a panoramic view of our intervention programs and achievements. Though our interventions and achievements in themselves are comparatively small, their results are effective and palpable.

While placing this first consolidated report of the organization in your hand, obviously I wish to place on record the initiatives and interests, insights and innumerable assistance of Fr. Francis Thadathil, MSFS, the Provincial of the Missionaries of St. Francis De Sales, Northeast India Province. He has been the guiding spirit and the leading light of the endeavor. I will be failing in my duty if I do not remember with gratitude Fr. Abraham Mullenkuzhy, MSFS, the former Provincial, who had been the President of the Society from its inception to 2007, and supported all its activities whole heartedly.

I offer my gratitude to all the funding agencies and interested individuals who have been part and parcel of FAsCE India. I must mention the names of the funding agencies, IGSSS, CRS, MM and Swiss Emmaus and Sr. Mertyl of WIN Centre, Guwahati who have been supporting the organisation. I would also like to extend my sincere thanks and appreciation to all the confreres, collaborators and staff members who relentlessly extend their cooperation and service with sincerity and dedication for the growth of the organization as well as the society at large.

Sincerely,

Fr Jose Karipadam, msfs (MSW, M.A, B.Ed)  
Director  
FAsCE India





## Genesis

Fransalian Agency for Social Care and Education in India (FAsCE India) is a grassroots development organization working in Northeastern region of India. Founded in 2005, it is the official development organ of the Missionaries of St Francis De Sales (MSFS) for Northeast. It is registered under the Registration of Societies' Act 1860 {No. SR/FASCE -2005} and has a FCRA number.

## Vision

Creation of a just and equitable, peaceful and prosperous society, rooted in the firm faith and collective conviction in the capacity of persons towards socio-economic development and individual well being of all, particularly the underprivileged.

## Mission

Ensuring personal empowerment and social development of the marginalized– rural and urban, tribal and non-tribal population of the Northeast India through creating awareness, transforming attitudes, availing opportunities and initiating activities.

## Objectives

- To create an economically better off, socially enlightened and culturally comprehensive society in which every individual and family has 'enough for its needs'.
- To foster a process of ongoing change in favour of the rural poor in a way in which they can sustain this process through building and managing appropriate local level institutions rooted in values of justice, equity and mutual support.
- To promote and propagate strategies through which the full potential of women, children and youth are realized.
- To influence public policies in favor of the poor.
- To strengthen networks and linkages between and among formal and non-formal institutions that can foster and sustain the impact of development initiatives.
- To be at the aid of the suffering humanity in times of need and natural calamity.
- To promote economic, educational, spiritual, technical and agricultural development and encourage entrepreneurship.
- To train, educate and equip the people with knowledge, skills attitude and capacity for development.
- To undertake relief, rehabilitation and resource mobilization fore the victims of flood and other calamities.

## Areas of Operation

FAsCE India works in all the seven northeastern states and West Bengal.





## Report of the Financial Year 2009 – 2010

### 1. Programme approaches of Fransalian Agency for Social Care and Education, India [FAsCE India]

Since inception FAsCE India has been engaged in the uplift of the poor and the marginalized section of the society. Promotion and formation of self-help groups (SHG) specially among women have been given thrust. Community has realized the importance of savings and credit. Women empowerment is the main goal of the integrated community development programme. Vocational skill development programme has increased the employability of the youths. Sponsorship programme enabled many children to continue their formal education.

#### 1.1. Integrated Rural Development and Women's Empowerment (IRD & WE)

Under this programme emphasis has been given on the following core issues:

- Formation of Self Help Group (SHGs) with focus on women SHGs
- Organizing and strengthening the existing SHGs into federation
- Various skills development training on Income Generating Activities (IGAs)
- Assistance in the form of cash and kind for establishment of livestock rearing units under IGA.
- Advocating rights through PRI, RTI and NREGA.

FAsCE India believes that long term socio economic development of the rural society is possible only through integrated and sustainable development of the people from the marginalized section of the society. These marginalized sections comprise of people from low-income groups and coming from diverse communities; mainly from tribals, adivasis and minorities. The integrated programme rests on a participatory approach, a belief that meaningful change is possible only through community participation thereby building community ownership and responsibility for one's own action and development.

#### A. Community Development Programme through village institution in Dhubri district of Assam

The intervention is aimed at strengthening the SHGs and federations. Though grant period ended in March 2009, organization continued the programme. The emphasis was on making the SHG federations to function as CBOs for the area to sustain the development agenda.

The details of the project achievements are as follows:

##### Status of SHGs:

No of SHGs	No of Women Member	Total Savings
38	486	3,41,428





### Status of Federation:

Formation of cluster level federations of SHGs was another thrust area of the project. So far two federations have been formed.

Name of Federation	Nos of SHG in Federations	Nos of Federation Members
Chaibari Mahila Federation	9	117
Kanaklata Mahila Federations	5	65

### Income Generating Activities of SHG:

SHGs are continuing their income generating enterprises. Details are given below.

S.No	Area	Total Groups in each Garden	No. Of group engaged in internal loaning	No. Of group opened shops.	No. of group started IGP at home	No. Of group started IGP as a group.	No. Of group marketing their products	No. Of group Reg. in Block	Bank A/c
1	Choibari	16	12	4	15	4	4	15	2
2	Krishnakali	6	6	3	7	2	2	5	0
3	Chapar	12	10	3	10	2	1	8	0
	<b>Total</b>	<b>34</b>	<b>28</b>	<b>10</b>	<b>32</b>	<b>8</b>	<b>7</b>	<b>28</b>	<b>2</b>

### B. Adult Literacy Campaign among Adivasi women in West Siang

FAsCE India is continuing the working among the Adi and the Adivasi women in West Siang district in Arunachal Pradesh. The programme was started in 2008 with the support from CMC-AMA/MM.

Name of Literacy Centre	Nos of Women Sensitised
Dali	15
Dalu	20
Nyodu	12
Taba	16
Nyorak	18
Nigam	15
Sibe	25
Sodom Boke	30
Bam	16
Regi Doke	18
<b>Total</b>	<b>185</b>





Classes on topics such as Gender Inequality, Responsible Parenthood, Early Marriage, Alcoholism, and Drinking Habits were followed up with discussions on both formal and informal occasions. These classes gave women knowledge, openness and awareness to matters of common issues. They began to cultivate a sense of common concern and ability to respond to such situations for Empowerment proceeds from knowledge, skills, and self confidence.

#### Intervention results:

- ☞ 185 women were sensitized and taught to read and write.
- ☞ Educated the women folk about various matters concerning their day to day life.
- ☞ Sensitized about different social issues.

#### Training Programmes

Name of the Programme	No. of Programmes	Participants
Training on Leadership & Teaching Skills	1	15
Periodic classes on Gender Equity, Responsible Parenthood, Alcoholism/Drinking habits, Education, Saving habits	5	75
<b>TOTAL</b>	<b>6</b>	<b>90</b>

### 1.2. Holistic Education Programme (HEP)

Education is one of the indicators of Human Development and a means of social empowerment which is largely reflected through the literacy rates of a state or a particular area. The social benefit of literacy attainment is much higher than its economic return. Literacy generates awareness and builds personality in such a way as to promote development and welfare of a nation and its people. However the disparity in the education system as well as the facilities and avenues greatly deprives the oppressed class. The education imparted in the rural areas when compared to the Urban, presents a wide gap in the quality of education, the low enrollment of children in the schools and their dropping out of schools – shows the difference in education pattern. The women and girls are the most sufferers in securing proper primary education.

FAsCE India, since its inception has been rendering holistic education to the children in its own schools and colleges.

The basic programs of the organization under HEP are

- .. Formal education
- .. Non formal education
- .. Educational Sponsorship Programme - Fransalian Kinder Mission (FKM)





## A. Formal Education

FAsCE India runs 33 educational Institutions at primary, higher secondary and college level with an intake capacity of 19340 students in Assam, Arunachal Pradesh, Nagaland, Manipur, Meghalaya, Tripura and West Bengal. FAsCE India stressed on

- .. Promoting value education for social change
- .. Educational counselling in schools
- .. Seminars for teachers and students
- .. Career Guidance courses

### ➤ Educational Institute Details

State	Number of Institutes	Total No of Students		No of Teachers
		Boys	Girls	
Assam	13	5695	4484	433
Arunachal Pradesh	7	1132	885	124
Manipur	3	969	859	72
Meghalaya	5	920	993	90
Nagaland	3	1525	1373	114
Tripura	1	75	90	5
West Bengal	1	180	160	14
<b>Total</b>	<b>33</b>	<b>10496</b>	<b>8844</b>	<b>852</b>

### ➤ Boarding Details

State	No of Hostel	No of Rooms	No. of Boarders	
			Boys	Girls
Assam	24	35	650	840
Arunachal Pradesh	12	14	180	176
Manipur	6	8	276	315
Meghalaya	6	6	216	324
Nagaland	6	6	215	285
<b>Total</b>	<b>54</b>	<b>69</b>	<b>1537</b>	<b>1940</b>

### ➤ Training Programmes

Name of the Programme	No. of Programmes	Participants
Teachers' Seminars	2	62
Value Education Seminar to students	2	128
<b>TOTAL</b>	<b>4</b>	<b>190</b>





## Construction of SFS School at Umwahlang

The FAsCE India since its inception has been rendering holistic education to the children in its own schools and colleges. And the stress had been on, '*reaching the unreached*', and as an expression of this preferential choice, we reached out to the people of Umwahlang by opening a parish in May 2008, and a school in 2009.

Umwahlang is a far flung village under the diocese of Nongstoin, in the State of Meghalaya. The general population is poor and belongs to the Khasi tribe. The educational and communication facilities are very minimal as the area is hilly and mountainous. However the people also dream to have their children taught in good schools with right values and disciplines and FAsCE India has readily accepted the challenge of meeting this dream of the people.

The initial works like leveling the ground, cutting the foundation have been done by the local people. The structure is already come up and the work is to continue in the months ahead, as we wish to take it to a full pledged school that can cater to the educational needs of the local population.

### B. Non-formal and Vocational Skill Development

Vocational skill development training are conducted in two centres – SFS Technical School, Diphu, and SFS Printing and Technical School, Imphal.

#### Imphal Centre:

The SFS Technical School, at Imphal conducts vocational skill development on printing, DTP, note book making, book binding and basic computer. 18 students passed out from the centre during this year.

#### Diphu Centre

Diphu SFS Technical School provides skill development on six trades- computer, book binding, printing, driving, carpentry and welding.

Trades	No of students enrolled	Nos of students Passed	Placement Provided
Carpentry	15	14	10
Printing	15	15	7
Welding	15	12	8
Driving	50	50	43
Book Binding	15	10	10
Computer	15	12	12
<b>Total</b>	<b>125</b>	<b>113</b>	<b>90</b>





### C. Educational Sponsorship Programme - Fransalian Kinder Mission (FKM)

Sponsorship programs support students from poor families to continue their education. Under this program, school fees, boarding fees are supported for the children. The detailed achievements during 2009-10 are as follow:

	Category	No. of Students Sponsored during the year 2009-10	
		Boys	Girls
A	Primary	4	3
B	Middle School	4	5
C	Secondary	3	1
D	Higher	4	6
E	Under Graduate	5	8
F	Post Graduate	1	3
	<b>Total</b>	<b>21</b>	<b>26</b>





## Report of the Financial Year 2008 – 2009

### 1. Programme approaches of Fransalian Agency for Social Care and Education, India [FAsCE India]

FAsCE India basically emphasizes on Community Development Programme focusing on women participation in socio-economic development including health, sanitation and education of the Children.

Following are the major programs which were implemented during this year. Many of the programs formed part of the continuing programs of the previous years.

#### 1.1. Integrated Rural Development and Women's Empowerment (IRD & WE)

Integrated community development program has been implemented in different parts of the region. Women are the main stakeholder of the program. Promotion and formation of SHG, facilitating members to link with financial institutions, leadership development, and functional literacy are the interventions undertaken. Followings are the projects implemented.

##### A. Community Development Programme through village institution in Dhubri district of Assam

FAsCE India started the Community Development Programme through village institution in Chapar area of Dhubri District in 2008. The project started with 34 existing SHGs. Indo-Global Social Service Society (IGSSS) supported the project from 2006 to 2008. After that FAsCE India is continuing with its own resources. This project added value to the earlier project by strengthening 34 existing SHGs, and leading them to form Federation and strengthening them with relevant trainings.

FAsCE India believes that formation of Federation will act as a better platform for addressing problems effectively through intervention with Govt. administration etc. The current project provides impetus to the existing 34 SHGs to form Federation and strengthen them further with relevant training programme. Together with formation of federation it enabled the members SHGs to continue savings, promote group activities and Income Generating Activities.

The details of the project achievements are as follows:

##### Intervention results:

- ☞ Up to March 2009, the groups' savings stand at more than Rs. 2,23,322/-.
- ☞ The groups have disbursed more than Rs. 2 lakhs as internal loan to SHGs.
- ☞ 27 groups are registered in blocks.
- ☞ 28 groups are linked to the banks. Out of 28 groups 2 groups have received bank loan.
- ☞ Over Rs. 3 lakhs have been availed by the SHGs as External loan.
  - Rs. 50,000/- have been mobilized from banks
  - Rs. 2,00,000/- from the MSFS





- ☞ 10 SHGs are having group IGA and more than 95 individuals have started IGAs.
- ☞ The incomes of 30% of the family who are involved in group activities have been increased.
- ☞ Among the women groups, 60% of the women are able to speak out courageously and are speaking with sense.
- ☞ 40% of the women are united to solve their internal issues and take up common issues of the area.
- ☞ Reduction in making of alcohols (local liquors) within the garden and also a decrease in alcohol consumption by men folk.
- ☞ In the last Panchayat election 3 of the SHG members – the Adivasi women- stood for election and two are elected as ward members.
- ☞ Women taking up initiatives to solve social issues within their community are encouraging.
- ☞ 6 social issues have been addressed by Federation.

#### Status of Federation:

Formation of cluster level federations of SHGs was another thrust area of the project. So far 2 federations have been formed.

Name of the Federation	No of SHGs in Federations	No of Federations Members
Chaibari Mahila Federation	6	76
Kanaklata Mahila Federations	8	90
<b>Total</b>	<b>14</b>	<b>166</b>

#### Training Programmes

Name of the Programme	No. of Programmes	Participants
<b>Awareness Programmes on Concept of federation</b>	3	122
Training on <b>Federation Formation</b>	2	37
Training Programme on the functioning of federation	3	62
Exposure programme	2	37
Training on <b>Livestock Management</b>	1	30
Training on IGA ( <i>instead of marketing skills training, IGA is conducted</i> )	1	41
Programme on PRI, RTI, NREGA	2	78
Training on different govt. schemes	2	78
Training Programmes on <b>Leadership</b>	3	87
Training programme on <b>Book keeping</b>	3	85
<b>TOTAL</b>	<b>22</b>	<b>660</b>





## B. Adult Literacy Campaign among Adivasi Women in West Siang

FAsCE India has been working among the Adivasi women in West Siang district in Arunachal Pradesh. The program was started in 2008 with the support from CMC-AMA. The projects aims at increasing literacy among the women and sensitize them on the social issues such as alcoholism, savings, credit, and social leadership. There are 10 literacy centers that facilitate the women in these aspects.

### Details of Literacy Centre:

Name of Literacy Centre	Nos of Women Sensitised
Gori-I	14
Sei	18
Kamdak	11
Basar Town	31
Nyigam	20
Kamdak	13
Gori -II	24
Gori-III	17
Gori-IV	24
Kadi	25
<b>Total</b>	<b>197</b>

### Intervention Results:

- ☞ 197 women from 10 villages have been sensitized about the various social issues.
- ☞ Women leaders have been trained to promote adult education. Their leadership qualities have been enhanced.
- ☞ Community have been sensitised on gender inequality existing in the society.
- ☞ Provided opportunity to improve their self-image and self worth.
- ☞ Promoted the concept of Self Help Groups among women.

## 1.2. Holistic Education Programme (HEP)

The basic programme of the organization in education fronts are

- ☞ Formal education
- ☞ Non formal education
- ☞ Educational Sponsorship Programme - Fransalian Kinder Mission (FKM)

### A. Formal Education

To reduce the gap of literacy rate between rural and urban population, FAsCE India initiated schooling at Primary & Secondary level followed by higher education in Colleges, with adequate, boarding facilities in Assam, Arunachal Pradesh, Nagaland, Manipur and Meghalaya. FAsCE India runs 34





educational Institutions at primary, higher secondary & college level with intake capacity of 25000 students. FAsCE India stressed on

- .. Promoting value education for social change
- .. Educational counseling in schools
- .. Seminars for teachers and students
- .. Career Guidance courses

#### ➤ Educational Institute Details

State	Number of Institutes	Total No of Students		No of Teachers
		Boys	Girls	
Assam	14	5555	4356	433
Arunachal Pradesh	7	1035	868	123
Manipur	3	925	854	72
Meghalaya	5	917	979	90
Nagaland	3	1518	1365	110
Tripura	1	72	75	4
West Bengal	1	165	155	12
<b>Total</b>	<b>34</b>	<b>10187</b>	<b>8652</b>	<b>845</b>

#### ➤ Boarding Details

State	No of Hostel	No of Rooms	No. of Boarders	
			Boys	Girls
Assam	26	35	585	765
Arunachal Pradesh	12	14	180	176
Manipur	6	8	252	267
Meghalaya	6	6	210	311
Nagaland	6	6	198	256
<b>Total</b>	<b>56</b>	<b>69</b>	<b>1425</b>	<b>1775</b>

#### ➤ Training Programmes

Name of the Programme	No. of Programmes	Participants
Teachers' Seminars	7	385
Value Education Seminar to students	3	235
Motivation/ animation on Literacy & Education	8	137
Seminar to Teachers on Teaching Techniques	2	53
<b>TOTAL</b>	<b>20</b>	<b>810</b>





## B. Non-formal and Vocational Skill Development

Non-formal and vocation skill development is essential to address the problem of unemployment. The objective of the program is to make the school drop out youth employable by enhancing their skill and knowledge. There are two vocational centers.

### Imphal SFS Centre:

The Imphal centre trains youth on basic computer operations, DTP, printing, book binding, Ruling and note book making. The centre enrolls mainly poor youth from tribal families. 18 students passed out from the centre this year.

### Diphu SFS Centre

Diphu SFS Technical School provides skill development on six trades- computer, book binding, printing, driving, carpentry and welding.

Trades	No of students enrolled	Nos of students Passed	Placement Provided	No of students self-employed
Carpentry	15	12	7	6
Printing	15	15	11	3
Welding	15	14	11	1
Driving	60	55	40	11
Book Binding	15	13	12	4
Computer	15	14	10	5
<b>Total</b>	<b>135</b>	<b>123</b>	<b>91</b>	<b>30</b>

## C. Educational Sponsorship Programme - Fransalian Kinder Mission (FKM)

FAsCE India promotes children education at all level through sponsorship program. Under this program, the children with aptitude for education and also who are financially weak are provided financial support in the form of tuition fee, hostel fee, and book grants. The Scheme enables them to continue their studies up to post-graduate or even higher technical degree courses.

### Details of the Centre:

Name of Center	No. of Children Sponsored
Holy Rosary- Purul	10
Holy Cross -Phoibung Khullen	12
SFS- Bashbari	7
SFS, Chapar	12
SFX- Basbari	5
St. John's Siju	6
Don Bosco -Hamren	4
MBBS and Nursing (one each)	2
PU Students	2
<b>Total</b>	<b>60</b>





### 1.3. Promotion of health and Housing (P. H. H)

Health of an individual or community is the result of a complex interaction between many factors. Water, food, sanitation, clothing, housing, education, access to care, employment and a host of social, economic and cultural factors have as much to do with health. There is a strong link between people's health and the development of the area and the State as a whole. FAsCE India believes that poor health

- reduces healthy life expectancy
- reduces educational achievement
- decrease productivity
- increase poverty & inequity

Poverty leads to the vicious circle of malnutrition, low level of education, disease, poor housing and lack of access to health care services.

FAsCE India initiated a process for providing basic health and hygienic needs of the rural population of remote areas of Arunachal Pradesh, where basic health care facilities are not available. The primary approaches of FAsCE India are

- promotion of Preventive & Social Medicines
- working for de addiction
- participating in TB Control Programme
- working with HIV/AIDS
- promotion of low cost housing
- rain water harvesting etc.

An outstanding programme under this scheme was the following:

#### A. Identification, Awareness, Treatment and Rehabilitation of T.B, Leprosy and Malaria Patients in West Siang Arunachal Pradesh

Organizing is providing TB, leprosy and malaria treatment services in Kaying Circle of West Siang District of Arunachal Pradesh, India. The project covers 10 villages. It is supported by Swiss Emmaus-ALES. Besides providing treatment it also give awareness on leprosy, malaria, TB and general health. Under this two leprosarium are established – one at Pasighat and the other at Alao.

	No of patient identified	No of patient treated / referred	No of patient rehabilitated
Leprosarium	35	22	8
Malaria	372	321	0
TB	18	8	3
Leprosy	Nil	-	-
<b>Total</b>	<b>425</b>	<b>351</b>	<b>11</b>



**Training Programmes**

Name of the Programme	No. of Programmes	Participants
Identification, Awareness, Treatment and Rehabilitation of T.B, Leprosy and Malaria Patients in the 10 Villages of Kaying Circle of West Siang District of Arunachal Pradesh, India.	3	85
Meeting with the Village Health Workers	8	65
<b>TOTAL</b>	<b>11</b>	<b>150</b>





## Report of the Financial Year 2007 – 2008

### 1. Programs

Since inception FAsCE India has been engaged in the uplift of the poor and the marginalized section of the society. Formation of self-help groups (SHG) and promotion of SHGs among women has been given a new thrust. Community has realized the importance of savings and credit. Women empowerment is the main goal of the integrated community development program. Vocational skill development program has increased the employability of the youths. Sponsorship program enabled many children to continue their formal education.

#### 1.1. Integrated Community Development Programme

Integrated community development program has been implemented in different parts of the region. Women are the main stakeholder of the program. Promotion and formation of SHG, facilitating members to link with financial institutions, leadership development, and functional literacy are the interventions undertaken. Followings are projects implemented.

##### A. Self Help Group for Integrated Development at Gogamukh

FAsCE India started community development program in Gogamukh area of Dhemaji district in 2004. Promotion and formation of SHG is the main objective of the project. The project was started with the support from Catholic Relief Services (CRS). The grant period ended in 2006. However organization is continuing the work in the project area.

	Name of the Villages	Population composition	No. of families	No. of SHGs formed
1	Lagasung	Bodo, Mishing, Adivasi, Rajbonshi, Assamese, Nepali	105	14
2	Nahorbari	Mishing	120	13
3	Minmang	Mishings	45	18
4	Mukulbari	Adivasi, Deori Assamese	50	18
5	Godatola	Adivasi	25	10
6	Santipur	Adivasi	55	16
7	Moinapara	Mishings	120	17
8	Ananda T.E	Adivasi	25	14
9	Dhakuakhana	Mishings	200	16
10	Joraigaon	Bodo	60	16
11	Moamari	Mishing	105	26
12	Kordoiguri	Mishing	116	24
	<b>TOTAL</b>			<b>202</b>

##### Intervention results:

- ☞ 202 SHGs are formed.
- ☞ Target communities have improved savings, access to credit and income generation.
- ☞ Women leadership have undertaken advocacy on social issues.
- ☞ Improved adult literacy and decreased school drop out.





- ☞ Good and responsible leaders in the villages are promoted to lead and guide the people.
- ☞ Information and input gained issues of education, development, voluntary effort, and people's participation and group dynamism.

### Training Programs

Sl. No.	Activities	Nos.
1.	Capacity building program for animators	2
2.	Community Mobilization program	10
3.	Sensitization program for SHG leaders	07
4.	Capacity building training of SHG leaders	04
5.	IGA trainings	02
6.	Adult Literacy classes	11 centers
7.	Health awareness programs / camps	04
8.	Exposure programme	01

### B. Animation and Trainings in Eight Villages in Dhemaaji

Development of leadership among the marginalized section of society is one of the primary interventions of the organization. FAsCE India has been facilitating the Adivasi women of Dhemaaji district to develop their leadership skill. It was started in 2006 with the support of CMC-AMA. The program aims at increasing the literacy among the women.

Name of Literacy Centre	Nos of Women Sensitised
Nopam	25
Hatgars	14
Jamukgiri	18
Jamukguri Panchali	11
Shebari Kaley	11
Madhupur Tea Bagan	12
Batgoria	25
Ratan Pur	24
<b>Total</b>	<b>140</b>

### Intervention results:

- ☞ 782 women from 8 villages, besides the 8 animators and supervisors are sensitized about the various social issues.
- ☞ An additional 140 illiterate women were taught to read and write.
- ☞ A total of 922 (782+140) women benefited from the project
- ☞ The animators are well trained to be village leaders and adult educationists.
- ☞ They are made aware of the gender inequality existing in the community and society.
- ☞ They are educated on the need for empowerment of women for a harmonious and just society.
- ☞ Women in the villages are encouraged to organize themselves and to work with others overlooking the differences of caste, creed and tribe.





- ☛ The project succeeded in bringing together the scattered women folk of the villages to be sensitive to the social problems.
- ☛ The project created and promoted leadership qualities among the women in the villages. They have learned to organize and conduct programmes, undertake activities etc.
- ☛ Provided opportunity to improve their self-image and self worth.
- ☛ Promoted the concept of Self Help Groups (SHG). - "Self help is the best help", "You alone can do it but you can not do it alone" etc.
- ☛ Made aware of the need for unity and cooperation among villagers.

### Training Programmes

Name of the Programme	No. of Programmes	Participants
Training programs on leadership and Animation	30	1550
Training programs on leadership and Animation	3	75
<b>TOTAL</b>	<b>33</b>	<b>1625</b>

### C. Empowerment of the Adivasi Women in Eight Villages of Dhubri District

FAsCE India started the community development intervention in Chapar of Dhubri district in 2006. The intervention aimed at promotion and formation of SHGs among the Adivasi community. The program was supported by Indo-Global Social Service Society (IGSSS). Some of the achievements are:

#### Intervention results: Status of the SHGs

No of SHGs	No of Women Member	Total Savings
Women SHG		
38	486	3,41,428

#### Status of Federation:

Formation of cluster level federations of SHGs was another thrust area of the project. So far two federations have been formed.

- Chaibari Mahila Federation
- Kanaklata Mahila Federations

#### Income Generating Activities of SHG:

The groups have started tea stalls, seasonal cultivation, fishery and animal husbandry. The groups which have regular IGA have income of minimum 1500 rupees per month. The groups which have seasonal farming have an income of minimum Rs. 1500/- to Rs. 7,000/- annually.





S.No	Area	Total Groups in each Garden	No. Of group engaged in internal loaning	No. Of group opened shops.	No. of group started IGP at home	No. Of group started IGP as a group.	No. Of group marketing their products	No. Of group Reg. in Block	Bank A/c
1	Choibari	18	9	2	2	7	5	0	12
2	Krishnakali	8	7	2	0	2	0	7	4
3	Chapar	10	10	1	1	1	0	6	5
	<b>Total</b>	<b>36</b>	<b>26</b>	<b>5</b>	<b>3</b>	<b>10</b>	<b>5</b>	<b>13</b>	<b>21</b>

### Training Programmes

Name of the Programme	No. of Programmes	Participants
Baseline survey of project area	1	180
Relief to flood victims of Gogamukh- Dhemaji	1	895
<b>TOTAL</b>	<b>2</b>	<b>1075</b>

## 1.2. Education Programme

Education is one of the major intervention issues of the organization. It consists in providing formal education and non-formal education. Sponsorship of children is the third intervention under this thematic area.

### A. Formal Education

Education is one of the primary objectives of the organization. FAsCE India is promoting and sensitizing the community on the importance of education for the children. Parents are motivated to send children to schools. The work is done in collaboration with the institutions run and managed by MSFS parishes. Parishes and FAScE India have been working closely on formal education. Some of the achievements are

- *There are 33 educational institutions- educating over 18000 students an year.*

### ➤ Educational Institute Details

State	Number of Institutes	Total No of Students		No of Teachers
		Boys	Girls	
Assam	13	5549	4351	433
Arunachal Pradesh	7	1036	864	124
Manipur	3	926	845	72
Meghalaya	5	918	965	90
Nagaland	3	1519	1350	114
Tripura	1	70	70	5
West Bengal	1	145	142	14
<b>Total</b>	<b>33</b>	<b>10163</b>	<b>8587</b>	<b>852</b>





### ➤ Boarding Details

State	No of Hostel	No of Rooms	No. of Boarders	
			Boys	Girls
Assam	24	35	587	761
Arunachal Pradesh	12	14	172	178
Manipur	6	8	246	265
Meghalaya	6	6	203	315
Nagaland	6	6	191	260
<b>Total</b>	<b>54</b>	<b>69</b>	<b>1399</b>	<b>1779</b>

### ➤ Teachers' Capacity Development Programmes

Name of the Programme	No. of Programmes	Participants
Teachers' Seminars	7	32
Value Education Seminar to students	4	78
Motivation/animation on Literacy & Education	4	110
Seminar to Teachers on Teaching Techniques	3	79
Teachers' Seminars	2	32
Value Education Seminar to students	5	78
Motivation/animation on Literacy & Education	3	58
Seminar to Teachers on Teaching Techniques	3	45
<b>TOTAL</b>	<b>31</b>	<b>512</b>

### B. Non-formal and Vocational Skill Development

Vocational skill development programs aim at enhancing the employability and self-employment of the youths. It gives an opportunity to the youth to learn vocational skill and trades. There are two centres – SFS Imphal and SFS Diphu.

#### Imphal SFS Centre:

The Imphal Printing and Technical centre was opened in 1989. It provides training on hand composing, printing, book binding, ruling and note book making. The trainees are school drop outs, almost all of them are from economically backward tribal families. All the trainees are given stipends to meet their food expenses and are given free accommodation within the institutes' premise. The trainees undergo a comprehensive training for one year. They learn the basic computer operations, DTP, printing, book binding, ruling of and note book making. In the year 16 students completed the program.

#### Diphu SFS Centre:

Diphu SFS Technical School has been engaged in enhancing vocational skill of the youth since 2007. The centre provides skill development on six trades- computer, book binding, printing, driving, carpentry and welding.





Trades	No of students enrolled	Nos of students Passed	Placement Provided	No of students self-employed
Carpentry	15	14	07	4
Printing	15	11	07	
Welding	15	14	07	2
Driving	15	15	15	
Book Binding	15	14	07	2
<b>Total</b>	<b>75</b>	<b>68</b>	<b>43</b>	<b>8</b>

### FKM Children Sponsorship

Education of children from poor families is another thrust of FAsCE India. The Children from poor families do not have easy access to education of children from poor families is often limited. FAsCE India has been implementing a sponsorship program with support from Fransalian Kinder Mission (FKM).

#### The project activities include:

- Assistance for Primary, Secondary and Higher education
- Promotion of value education for social change
- Educational counseling in schools
- Seminars for teachers and students
- Career Guidance

Sl. No.	No of children sponsored:	Amount supported	Beneficiaries
1	21	1,27,440	10-Boys, 10 -Girls, One Blind Boy, One blind & Deaf Girl and One MBBS student.

### 1.3. Community Health Development

Health development through community health education and services plays an important role in improving the health status of people. FAsCE India has been implementing community based health program in the remote areas where health facilities are not easily accessible to people.

#### A. Identification, Awareness, Treatment and Rehabilitation of T.B, Leprosy and Malaria Patients in West Siang Arunachal Pradesh

Organization is implementing a health intervention on TB, leprosy and Malaria at Kaying Circle of West Siang District of Arunachal Pradesh, India. The project is implemented in 10 villages with support from Swiss Emmaus-ALES. It educates people on issues related to leprosy, malaria, TB and general health. It also provides basic health services. Under this, two leprosarium are assisted – one at Pasighat and the other at Alao.



**Project Area Data:**

<b>Total Villages</b>	<b>10</b>
<b>Total Households</b>	<b>450</b>
<b>Total Population</b>	<b>3200</b>
Adult Male	838
Adult Female	720
Youth (Above 14 yrs)	854
Children (Below 14 yrs )	788

**Intervention Result**

	<b>No of patient treated</b>	<b>Male</b>	<b>Female</b>	<b>Children</b>
Malaria	1850	853	780	217
Leprosy	42	16	-	-
SER to Leprosy patients	42	16	18	08
<b>Total</b>	<b>1934</b>	<b>885</b>	<b>798</b>	<b>225</b>

**Training Programs**

<b>Name of the Programme</b>	<b>No. of Programmes</b>	<b>Participants</b>
Health workers training program	02	20
Health Awareness camp	11	85
Health workers training program	02	20
<b>TOTAL</b>	<b>15</b>	<b>125</b>





# Financial Statements

2007 – 2010





## Financial Statements for the financial year 2009-10

FORM NO. 10 – B  
SEE RULE 17 – A

### AN EXTRACT FROM AUDIT REPORT

#### AUDIT REPORT UNDER SECTION 12 A (B) OF THE INCOME TAX ACT, 1961 IN THE CASE OF CHARITABLE OR RELIGIOUS TRUSTS/INSTITUTIONS

We have examined the Balance Sheet of FRANSALIAN AGENCY FOR SOCIAL CARE & EDUCATION: SHILLONG as at 31<sup>st</sup> March, 2010 and the Income and Expenditure Account for the year ended on that date which are in agreement with the books of accounts maintained by the said Trust/Institutions.

We have obtained all the information and explanations which to the best of our knowledge were necessary for the purpose for the audit. In our opinion, proper books of accounts have been kept by the head office and the branches of the above named Institution visited by us so far as appears from our examination of the books and proper returns adequate for the purpose of audit have been received from branches not visited by us subject to the comments given below:

In our opinion and to the best of our information and according to the explanations given to us, the said accounts give a true and fair view in the case of the:

- |                                  |  |
|----------------------------------|--|
| a) Balance Sheet                 | of the state of affairs of the above named Institutions as at 31 <sup>st</sup> March 2010, and |
| b) Income & Expenditure Account, | of the DEFICIT of income of the year ending on above date.                                     |

The prescribed particulars are annexed hereto.

Date: Shillong – 793 001

The 20<sup>th</sup> September 2010

Sd/-  
A S BISWAS

A. S. BISWAS & CO.  
CHARTERED ACCOUNTS





## SUMMARY OF FINANCIAL STATEMENTS

### BALANCE SHEET AS AT MARCH 31, 2010

Particulars	Liabilities	Assets
<b>FUND ACCOUNT:</b>		
As per last account	3,345	
Less: Deficit of Income during the year	<u>3,252</u>	93.00
<b>LIABILITIES OUTSTANDING FOR:</b>		
<b><u>UNWAHALANG SCHOOL PROJECT:</u></b>		
Received during the year	1,864,700	
Less: Utilized for the year	<u>1,600,900</u>	
	263,800	
Expenses	<u>10,500</u>	274,300.00
<b>CASH AT BANK:</b>		
In Savings Account with The South Indian Bank, Guwahati	140,718	
The Federal Bank Limited, Shillong	<u>6,732</u>	147,450.00
<b>CASH IN HAND:</b>		126,943.00
<b>Total (Rs.)</b>	<b>274,393.00</b>	<b>274,393.00</b>

### INCOME & EXPENDITURE FOR THE YEAR ENDED 31<sup>ST</sup> MARCH 2010

Particulars	Expenditures	Incomes
<b>To/By</b> Revenue Payments/Receipts:		
Per Receipts & Payments A/c	36.00	284.00
<b>By</b> Audit Fee	3,500.00	
<b>By</b> Balance being DEFICIT of Income Transferred to Fund Account		3,252.00
<b>Total (Rs.)</b>	<b>3,536.00</b>	<b>3,536.00</b>





# RECEIPTS & PAYMENTS FOR THE YEAR ENDED 31<sup>ST</sup> MARCH 2010

Particulars	Receipts		Payments
<b>To Opening Balances:</b>			
Cash at bank: Savings Accounts	7,502		
Cash in hand	2,843	10,345.00	
<b>To Receipts:</b>			
<u>Capital:</u>			
Project Receipts	1,864,700		
Umwahalang School Construction			
Revenue Interest Received	284	1,864,984.00	
<b>By Closing Balances:</b>			
Cash at Bank: Savings Account	147,450		
Cash in hand	126,943		274,393.00
<b>By Capital Expenses:</b>			
Project Expenses			
Umwahalang School Construction			1,600,900.00
<b>By Revenue Expenses:</b>			
Bank Charges	36		36.00
<b>Total (Rs.)</b>	<b>1,875,329.00</b>	<b>1,875,329.00</b>	





## Financial Statements for the financial year 2008-09

### AN EXTRACT FROM AUDIT REPORT

#### AUDIT REPORT UNDER SECTION 12 A (B) OF THE INCOME TAX ACT, 1961 IN THE CASE OF CHARITABLE OR RELIGIOUS TRUSTS/INSTITUTIONS

We have examined the Balance Sheet of FRANSALIAN AGENCY FOR SOCIAL CARE & EDUCATION: SHILLONG as at 31<sup>st</sup> March, 2009 and the Income and Expenditure Account for the year ended on that date which are in agreement with the books of accounts maintained by the said Trust/Institutions.

We have obtained all the information and explanations which to the best of our knowledge were necessary for the purpose for the audit. In our opinion, proper books of accounts have been kept by the head office and the branches of the above named Institution visited by us so far as appears from our branches not visited by us subject to the comments given below:

In our opinion and to the best of our information and according to the explanations given to us, the said accounts give a true and fair view in the case of the:

- |                                  |  |
|----------------------------------|--|
| a) Balance Sheet                 | of the state of affairs of the above named Institutions as at 31 <sup>st</sup> March 2009, and |
| b) Income & Expenditure Account, | of the DEFICIT of income of the year ending on above date.                                     |

The prescribed particulars are annexed hereto.

Date: Shillong – 793 001

The 19<sup>th</sup> September 2009

Sd/-  
A S BISWAS

A. S. BISWAS & CO.  
CHARTERED ACCOUNTS





## SUMMARY OF FINANCIAL STATEMENTS

### BALANCE SHEET AS AT MARCH 31, 2009

Particulars	Liabilities	Assets
<b>FUND ACCOUNT:</b>		
As per last account	4,574	
Less: Deficit of Income during the year	<u>1,229</u>	3,345.00
<b>LIABILITIES OUTSTANDING FOR:</b>		
Expenses	7,000.00	
<b>CASH AT BANK:</b>		
In Savings Account with The South Indian Bank, Guwahati	1,000	
The Federal Bank Limited, Shillong	<u>6,502</u>	7,502.00
<b>CASH IN HAND:</b>		2,843.00
<b>Total (Rs.)</b>	<b>10,345.00</b>	<b>10,345.00</b>

sd/  
Fr.  
President, MSFS

sd/  
Fr.  
Secretary, MSFS

sd/  
Chartered Accountant  
Guwahati - 781 00

### INCOME & EXPENDITURE FOR THE YEAR ENDED 31<sup>ST</sup> MARCH 2009

Particulars	Expenditures	Incomes
<b>To/By</b> Revenue Payments/Receipts: Per Receipts & Payments A/c	78,050.00	80,321.00
<b>By</b> Audit Fee	3,500.00	
<b>By</b> Balance being DEFICIT of Income Transferred to Fund Account		1,229.00
<b>Total (Rs.)</b>	<b>81,550.00</b>	<b>81,550.00</b>





## RECEIPTS & PAYMENTS FOR THE YEAR ENDED 31<sup>ST</sup> MARCH 2009

Particulars		Receipts	Payments
<b>To</b>	<b>Opening Balances:</b>		
	Cash at bank: Savings Accounts	14,181	
	Cash in hand	893	15,074.00
		<hr/>	
<b>To</b>	<b>Revenue Receipts:</b>		
	Contribution Received	63,000	
	Interest Received	321	
	Participants' Contribution	17,000	80,321.00
		<hr/>	
<b>By</b>	<b>Closing Balances:</b>		
	Cash at Bank: Savings Account	7,502	
	Cash in hand	2,843	10,345.00
<b>By</b>	<b>Capital Expenses:</b>		
	Outstanding Liability		7,000.00
<b>By</b>	<b>Revenue Expenses:</b>		
	Programme Expenses:		
	Health & Hygiene Awareness	68,050	
	Honorarium to Resource Person	6,000	
	Travelling Expenses	4,000	78,050.00
		<hr/>	
<b>Total (Rs.)</b>		<b>95,395.00</b>	<b>95,395.00</b>





## Financial Statements for the financial year 2007-08

### AN EXTRACT FROM AUDIT REPORT

#### AUDIT REPORT UNDER SECTION 12 A (B) OF THE INCOME TAX ACT, 1961 IN THE CASE OF CHARITABLE OR RELIGIOUS TRUSTS/INSTITUTIONS

We have examined the Balance Sheet of FRANSALIAN AGENCY FOR SOCIAL CARE & EDUCATION: SHILLONG as at 31<sup>st</sup> March, 2008 and the Income and Expenditure Account for the year ended on that date which are in agreement with the books of accounts maintained by the said Trust/Institutions.

We have obtained all the information and explanations which to the best of our knowledge were necessary for the purpose for the audit. In our opinion, proper books of accounts have been kept by the head office and the branches of the above named Institution visited by us so far as appears from our branches not visited by us subject to the comments given below:

In our opinion and to the best of our information and according to the explanations given to us, the said accounts give a true and fair view in the case of the:

- |                                  |  |
|----------------------------------|--|
| a) Balance Sheet                 | of the state of affairs of the above named Institutions as at 31 <sup>st</sup> March 2008, and |
| b) Income & Expenditure Account, | of the DEFICIT of income of the year ending on above date.                                     |

The prescribed particulars are annexed hereto.

Date: Shillong – 793 001

The 30<sup>th</sup> June 2008

Sd/-  
A S BISWAS

A. S. BISWAS & CO.  
CHARTERED ACCOUNTS





## SUMMARY OF FINANCIAL STATEMENTS

### BALANCE SHEET AS AT MARCH 31, 2008

Particulars	Liabilities	Assets
<b>FUND ACCOUNT:</b>		
As per last account	9,213	
Less: Deficit of Income during the year	<u>4,639</u>	4,574.00
<b>LIABILITIES OUTSTANDING FOR:</b>		
Expenses	10,500.00	
<b>CASH AT BANK:</b>		
In Savings Account with The South Indian Bank, Guwahati	1,000	
The Federal Bank Limited, Shillong	<u>13,181</u>	14,181.00
<b>CASH IN HAND:</b>		893.00
		<b>15,074.00</b>

### INCOME & EXPENDITURE FOR THE YEAR ENDED 31<sup>ST</sup> MARCH 2008

Particulars	Expenditures	Incomes
<b>To/By</b> Revenue Payments/Receipts: Per Receipts & Payments A/c	205,940.00	204,801.00
<b>By</b> Audit Fee	3,500.00	
<b>By</b> Balance being DEFICIT of Income Transferred to Fund Account		4,639.00
<b>Total (Rs.)</b>	<b>209,440.00</b>	<b>209,440.00</b>





# RECEIPTS & PAYMENTS FOR THE YEAR ENDED 31<sup>ST</sup> MARCH 2008

Particulars	Receipts		Payments
<b>To Opening Balances:</b>			
Cash at bank: Savings Accounts	15,353		
Cash in hand	860	16,213.00	
<b>To Revenue Receipts:</b>			
Contribution Received	203,770		
Interest Received	1,031		
Participants' Contribution	0	204,801.00	
<b>By Closing Balances:</b>			
Cash at Bank: Savings Account	14,181		
Cash in hand	893		15,074.00
<b>By Revenue Expenses:</b>			
Programme Expenses:			
Community Leadership	0		
Scholarship to Students	205,440		
Training	500		205,940.00
<b>Total (Rs.)</b>	<b>221,014.00</b>	<b>221,014.00</b>	





## Case Study

**A**rri SHG under Choibari T.E. was formed on 01-08-06. With the help of FAsCE India staff, they opened an account at AGB Bank, Bahalpur Branch. Their regular savings were Rs. 30/- per month. They received a loan of Rs. 25,000/- from AGB Bank for starting a tea stall. They opened a permanent tea stall at their local market, and are selling various types of sweets and tea on every market day (Weekly). At present, they have a total corpus fund of Rs. 39,000/-. The group members are very happy because they are growing to be self reliant, improve their families and villages through self help group means.

**N**ikita SHG started with a regular saving of Rs. 20/- per month with 12 members. Last month of Mar '09, they attended a training on 'Live Stock Management' (Piggery & Poultry), and at the end of the training, the group leader, having received lots of practical ideas, promised to test/ practice them in her own group. Though the group did not receive any loan from bank or block, they decided to open a piggery farm from their own savings money. And have now three big pigs ready to be sold and is expected to fetch an amount between Rs. 25,000 to Rs. 30,000. At the time of reporting, they have a total fund of Rs. 32,000/-. The group spent Rs. 15,500/- for house making and Rs. 4,000/- to buy three pigs. The group meeting held regularly every month through active participation of all the members. The group has special vision to make it No. 1 group in that garden areas.

## Governing Board of FAsCE India

Name	Designation
Fr. Francis Thadathil msfs	President
Fr. Thomas Nirappel	Vice-President
Fr. Jose Karipadam	Secretary
Fr. Emmanuel Mappilaparambil	Treasurer
Fr. Mathew Vazhaparambil	Member
Fr. RoyParayaniyil	Member
Fr. K. P Joseph	Member





## Staff of FAsCE India

Sl. No.	Name	Designation	M/F
1	Jose Karipadam	Director	M
2	Stephan M	Ast. Director	M
3	Cherian M	State Rep	M
4	Cornelius Bara	State Coordinator	M
5	George Pekkatt	Diocesan Director	M
6	George P.	State Rep.	M
7	Peter P	District Rep	M
8	John P	Accountant	M
9	Dr.T.Darung	Consultancy	M
10	Dr.(Mrs) T Darung	Visiting Doctor	F
11	Mr. John Ekka	Coordinator	M
12.	Ms .A.Kutum	Animator	F
13	Mr. Michael Mochahari	Animator	M
14	Ms. Jyoti Mili	Animator	F
15	Ms. Kobit Dokey	Animator	F
16	Mrs. Nileswari Narzari	Coordinator	F
17	Mrs. Franciska Minj	Animator	F
18	Mrs. Karmila Murmu	Animator	F
19	Ms. Anima Tayung	Animator	F
20	Mr. Noel Longa	Animator	M
21	Ms. Tulsi Hasda	Animator	F
22	Ms. Osi Paleng	Animator	F
23	Mrs. Yaying Pali	Animator	F
24	Mrs. Yamir	Animator	F
25	Mrs. Yaser	Animator	F
26	Mr. Bogiram Bori (Mark)	Coordinator	M
27	Ms. Jimni	Animator	F
28	Ms. Lalita	Animator	F
29	Ms Kiran	Animator	F
30	Ms. Nilima	Animator	F
31	Ms. Nirjula Kujur	Animator	F
23	Miss Regina	Animator	F
33	Miss Gorethi	Animator	F

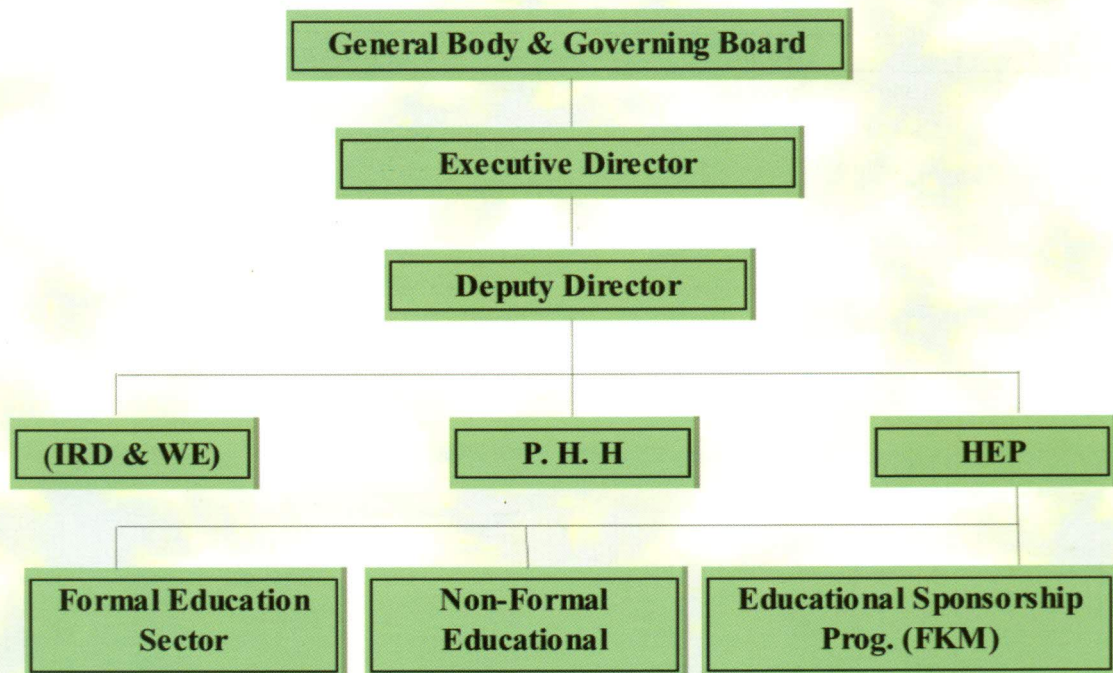
## Partners in Development

- Indo-Global Social Service Society (IGSSS)
- Catholic Relief Services (CRS)
- CMC-AMA
- Swiss Emmaus-ALES
- Fransalian Kinder Mission (FKM)





## Organizational Structure



## Project Area Map







Contact Address:

**FAsCE India**

G.P.O. Box No. 308

Guwahati – 780 001, Assam

Ph.: 0361-2642174

Email: josekaripadam@yahoo.com

Web: [www.fasceindia.4t.com](http://www.fasceindia.4t.com)